

# Access Professional Edition Release Notes

Release	Access Professional Edition 2.0 <b>TU3</b>
Build	2.7.29.12

## New Features

- French is now a supported language

## Changes / Bug-Fixes

- The personnel list in Personnel Management is now correctly updated after a person is deleted from the system.
- Displaying images from sources that contain an IP-address in their path name has been improved.
- Pasting an invalid license Activation key into the License Activation Key area is now correctly rejected by the software.
- The network timing for personnel without an identification pin code has been improved.
- Log Viewer errors regarding memory protection faults has been fixed.
- Report filtering and logbook navigation has been improved for easier report creation.

## Known Issues

- N/A

## Upgrading to Access Professional Edition TU3 Build 2.7.29.12

**Note 1:** Access Personal Edition all builds - If you are upgrading from Access Personal Edition 1.0 you will need to purchase the appropriate APE 2.0 software and licensing before proceeding.

**Note 2:** Access Professional Edition all versions prior to TU2 build 2.7.29.7, when upgrading to the current version TU3 build 2.7.29.12. Please see the section below “Deactivating an active License in APE 2.0” after uninstalling the software. You will also need to contact Bosch Technical Support to obtain new license authorization codes. Your previous authorization or activation codes will be necessary.

**Note 3:** Upgrading from TU2 build 2.7.29.7 please follow the normal upgrade procedure outlined in the software installation manual.

## Uninstalling a previous version of APE 1.0 or 2.0

1. Please consult the APE-Installation Manual provided on the CD and the Bosch website.

## Upgrading APE 2.0 software

1. Obtain a copy of the software from the Access Professional Edition Micro-site.  
<http://www.boschsecurity.us/en-us/APE/software>
2. The software download is in the form of a standard ISO image. You will need to create a CD from this image to proceed.
3. After creating the image insert the CD and begin the install.
4. Please reference the software installation manual for complete details.

## Deactivating an active License in APE 2.0

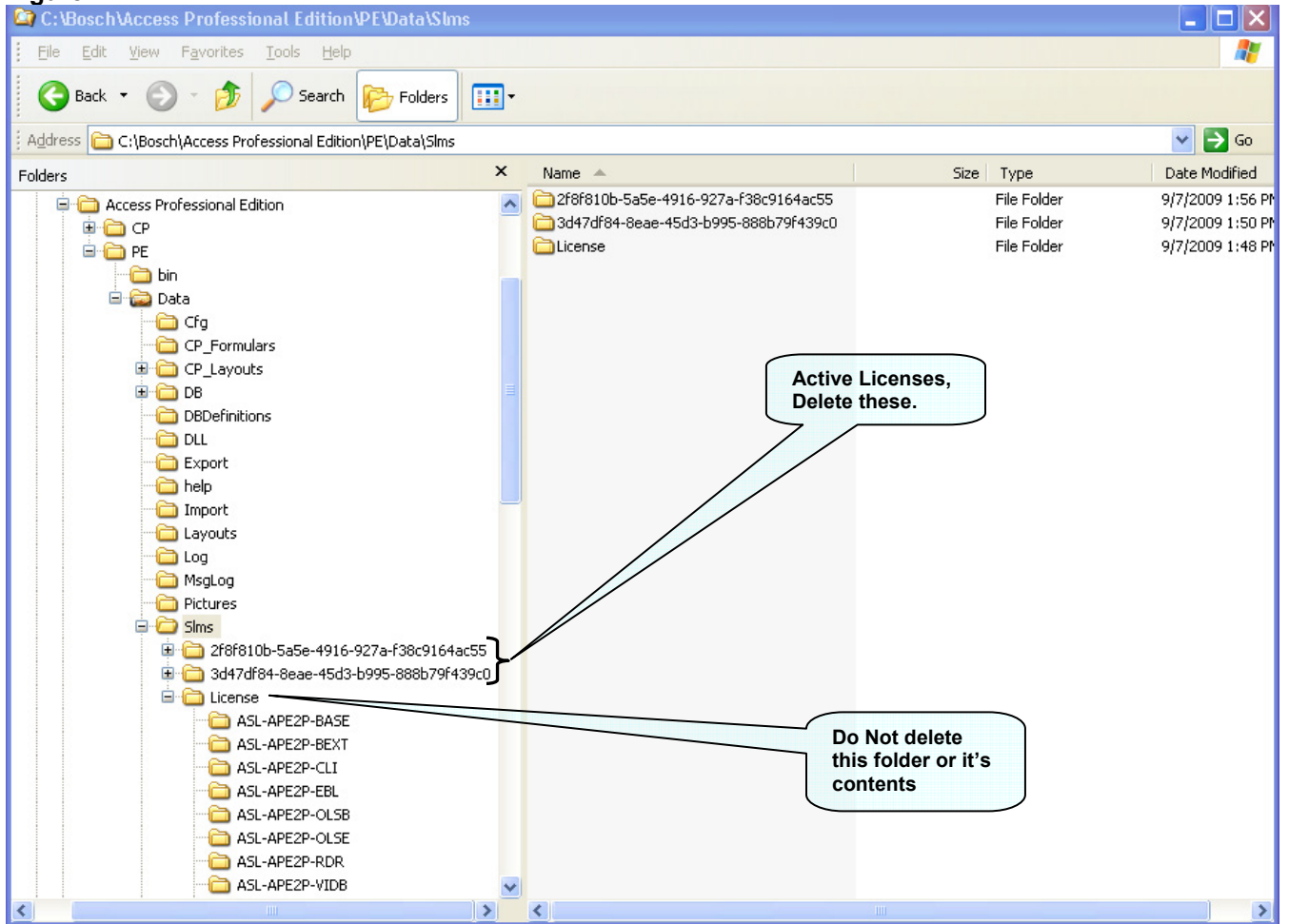
**NOTE:** This is necessary if upgrading from any version prior to TU2 build 2.7.29.7 see NOTE 2 above.

There is no dialog or automated uninstall routine to deactivate/remove an existing license.

1. Always make a Backup first (Copy of the complete folder “BOSCH\Access Personal Edition”)
2. You find the licenses in the folder named SLMS located in C:\Bosch\Access Professional Edition\Data\SLMS (see figure#1)
3. In the SLMS folder locate the “License” folder. Do not delete this folder or its contents.
4. The SLMS folder could also contain several other folders (see example Figure#1) these are the active licenses.
5. If you open these other folders, you will see the license, as shown in figure#2. In figure#2 you will see a base a base video license ASL-APE2P-VIDB
6. Stop the Configurator, delete the additional folders within SLMS-folder (**do not delete the “License” folder**), see figure#1.
7. Start the Configurator and go to the license activation section. If successful you will see no active licenses on the right hand side. If you still see an active license close the Configurator and repeat steps 6 and 7.
8. Now activate your new licenses in the normal way.
9. After you have activated the new licenses, you will need to log out and back into the Configurator before the changes take place.

# Access Professional Edition Release Notes

Figure#1



# Access Professional Edition Release Notes

Figure#2

